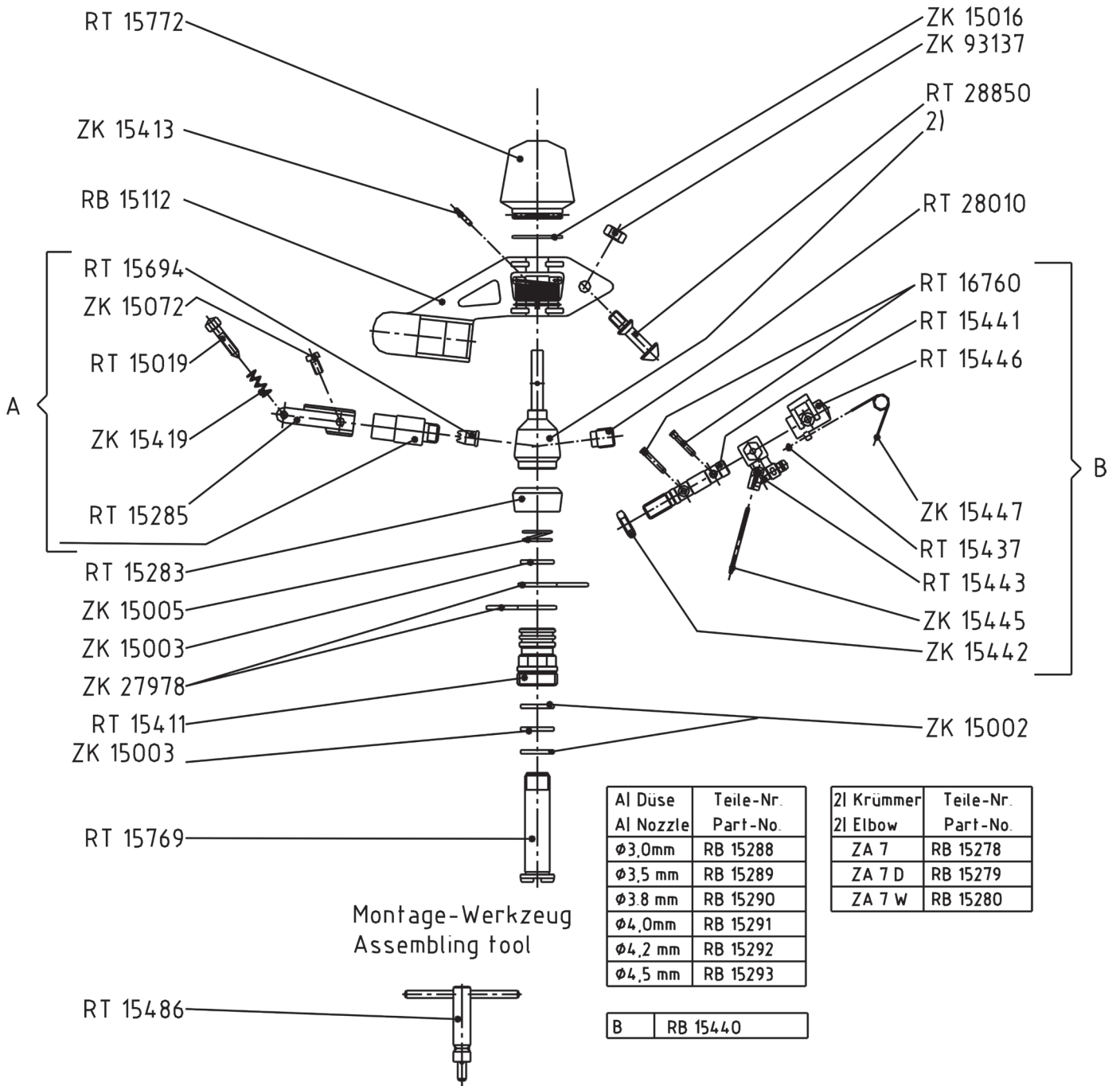
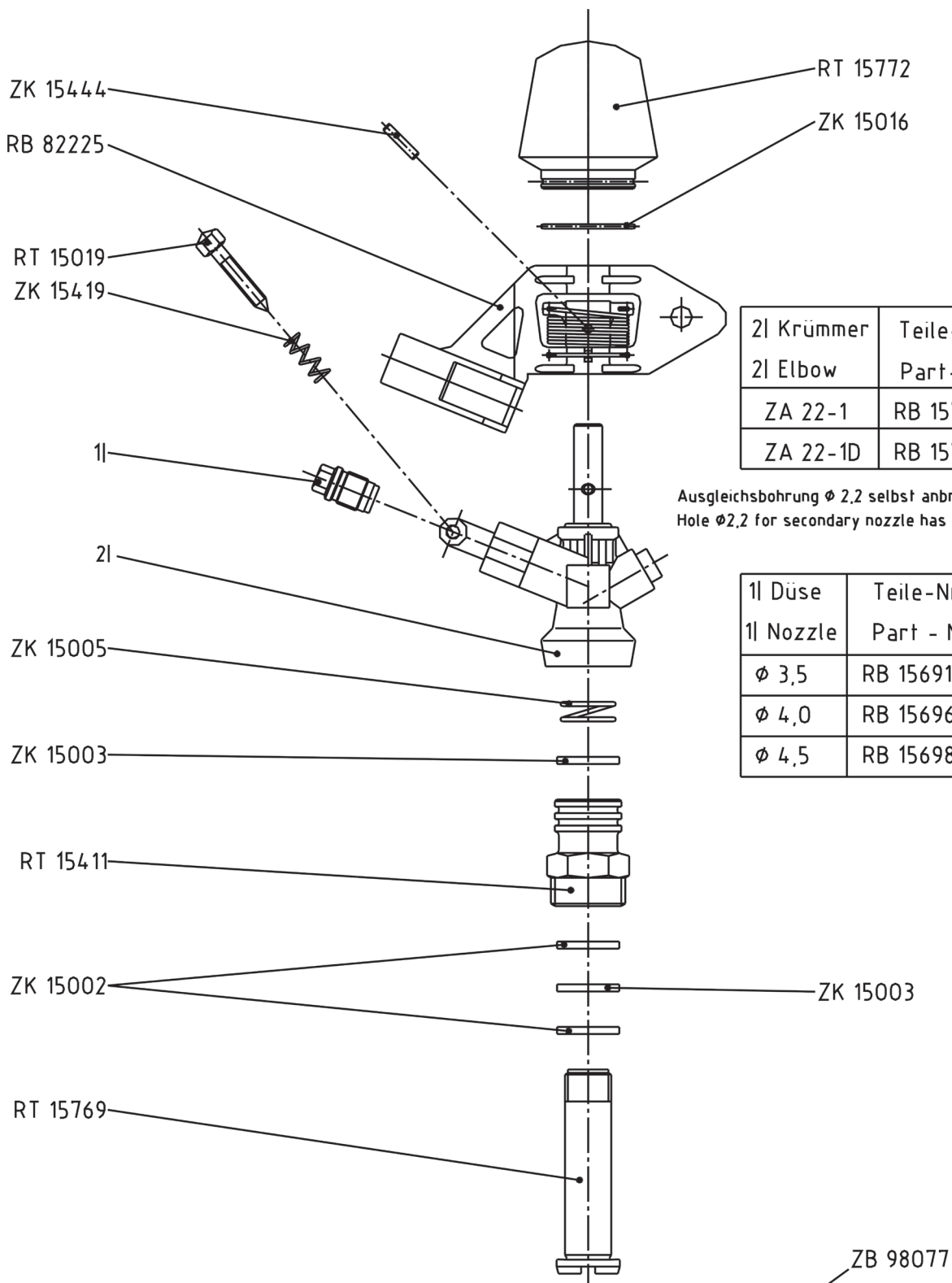




# ZA 7 / W / D



# ZA 22-1 / D



2l Krümmer	Teile-Nr.
2l Elbow	Part-No.
ZA 22-1	RB 15766
ZA 22-1D	RB 15766

Ausgleichsbohrung  $\phi$  2,2 selbst anbringen !  
 Hole  $\phi$  2,2 for secondary nozzle has to be drilled !

1l Düse	Teile-Nr.
1l Nozzle	Part - No.
$\phi$ 3,5	RB 15691
$\phi$ 4,0	RB 15696
$\phi$ 4,5	RB 15698

Montage-Werkzeuge  
 Assembling tools

