

**EINZELTEIL-LISTEN**

**SPARE-PARTS-LISTS**

Für das Regnerprogramm

For sprinklers

**ZX**

**ZA**

**ZS**

**ZB**

**ZE**

**ZK**

**ZM**

**ZN**

**P2S**

**P2M**

**TV 2000**

**DREIFUSS/TRIPOD**

**REGENANLAGEN**  
**HELMUT BAUER GMBH**

Dirnismaning 55  
85748 Garching

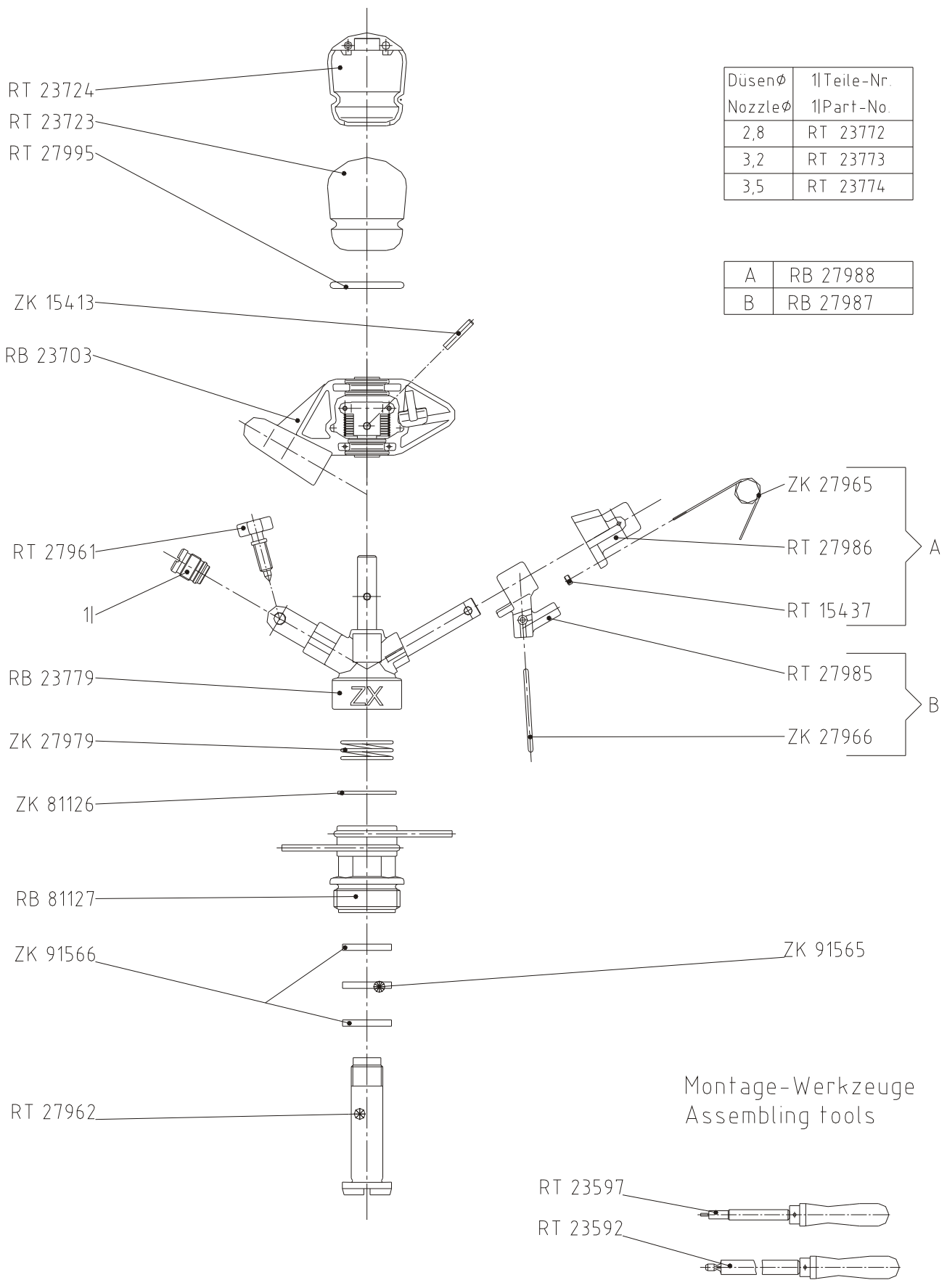
Tel. 089 / 3 20 19 08

Fax 089 / 3 20 60 61

[www.regenanlagen.de](http://www.regenanlagen.de)



# ZX 30-3 WR



DüsenØ NozzleØ	1lTeile-Nr. 1lPart-No.
2,8	RT 23772
3,2	RT 23773
3,5	RT 23774

A	RB 27988
B	RB 27987

RT 23724  
RT 23723  
RT 27995

ZK 15413  
RB 23703

RT 27961  
1l

RB 23779  
ZK 27979

ZK 81126  
RB 81127

ZK 91566

RT 27962

ZK 27965  
RT 27986  
RT 15437

RT 27985  
ZK 27966

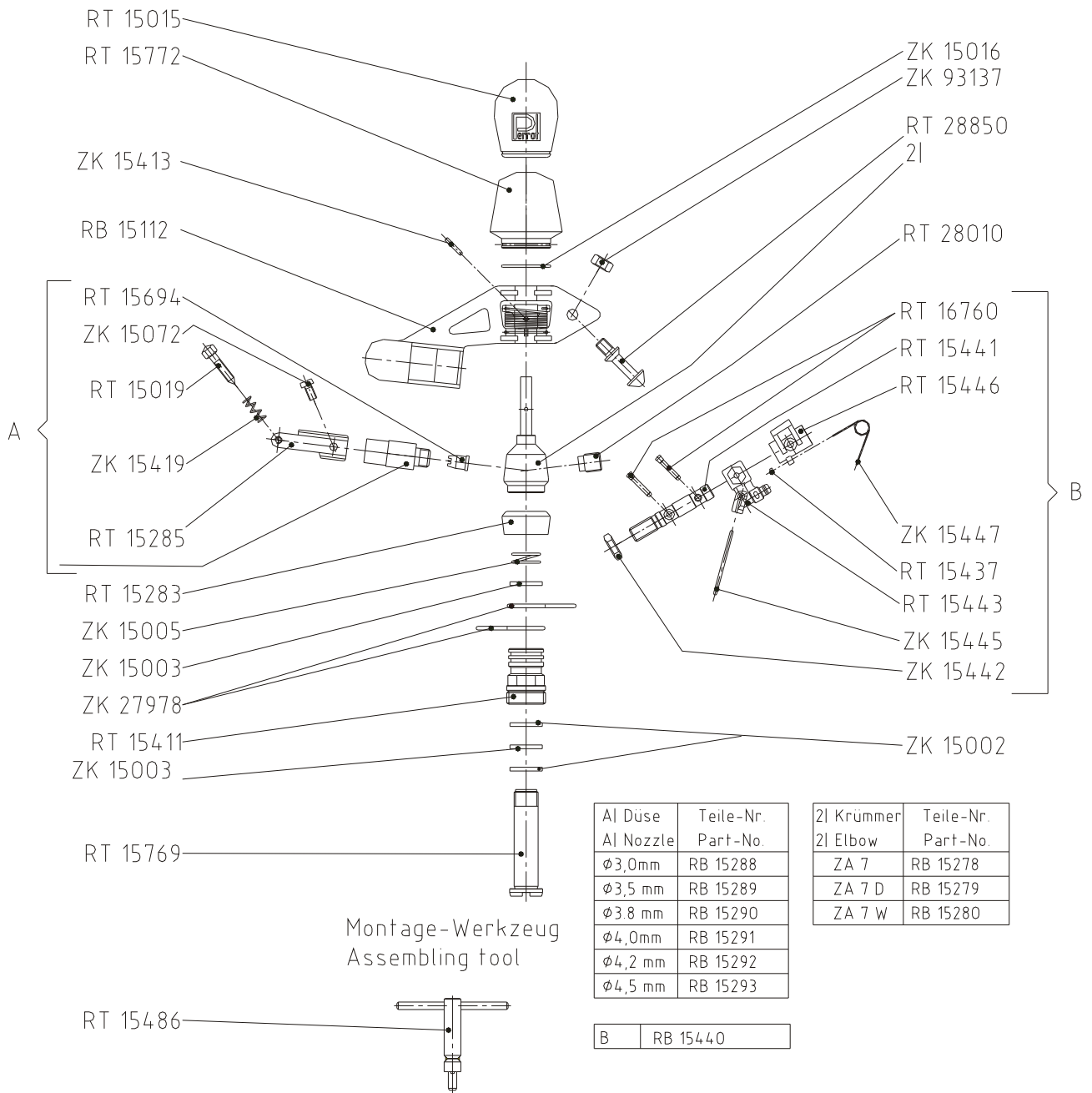
ZK 91565

Montage-Werkzeuge  
Assembling tools

RT 23597  
RT 23592

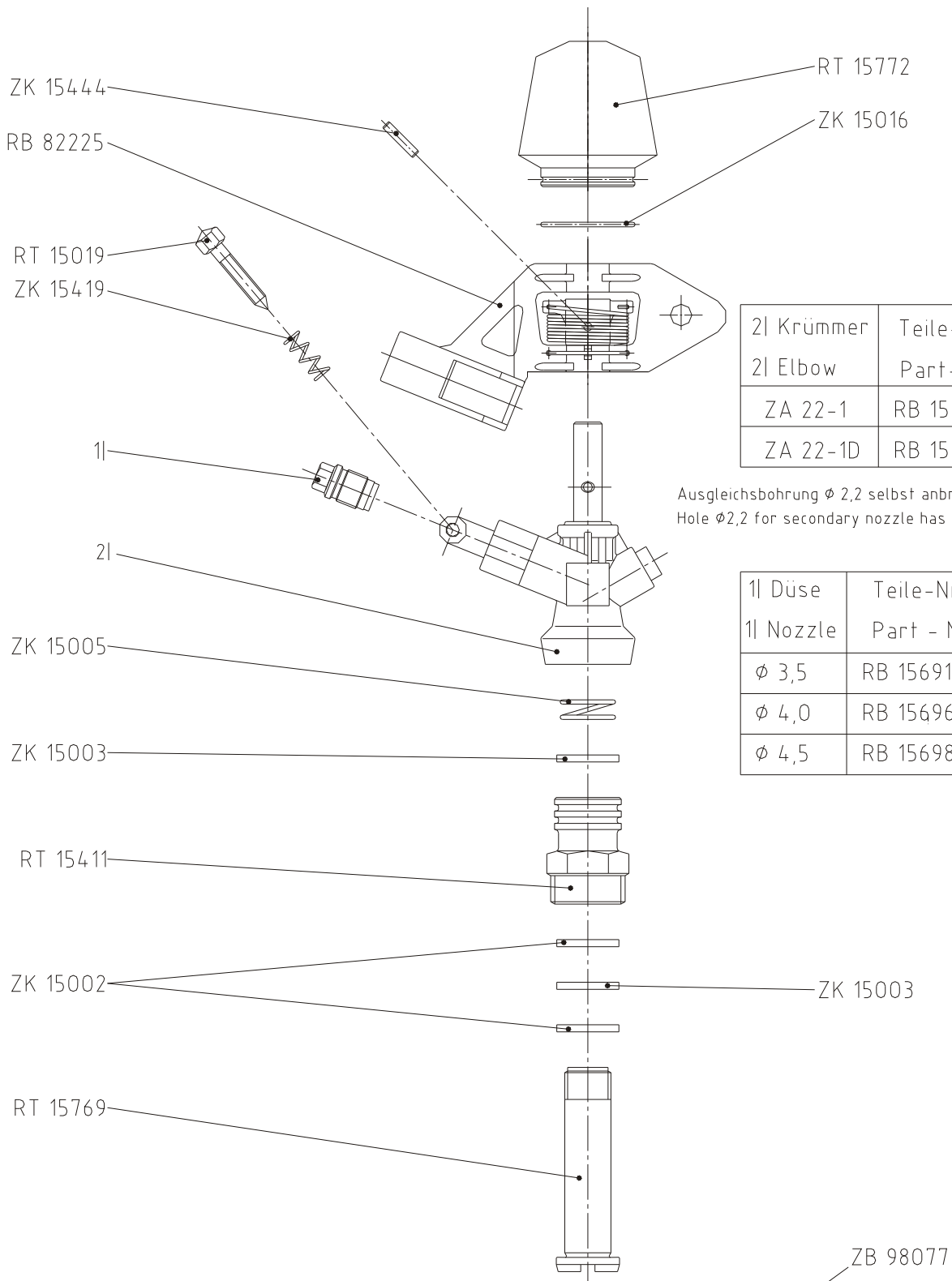
**Stand: 19.11.2012**  
**EL 00161**

# ZA 7 / W / D



**Stand: 27.01.2014**  
**EL 00162**

# ZA 22-1 / D

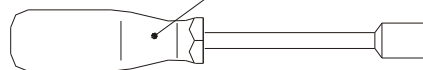
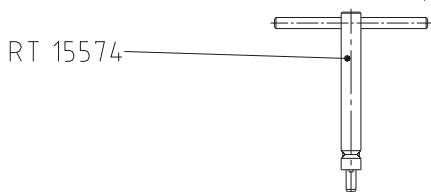


2l Krümmer	Teile-Nr.
2l Elbow	Part-No.
ZA 22-1	RB 15766
ZA 22-1D	RB 15766

Ausgleichsbohrung  $\phi$  2,2 selbst anbringen !  
 Hole  $\phi$  2,2 for secondary nozzle has to be drilled !

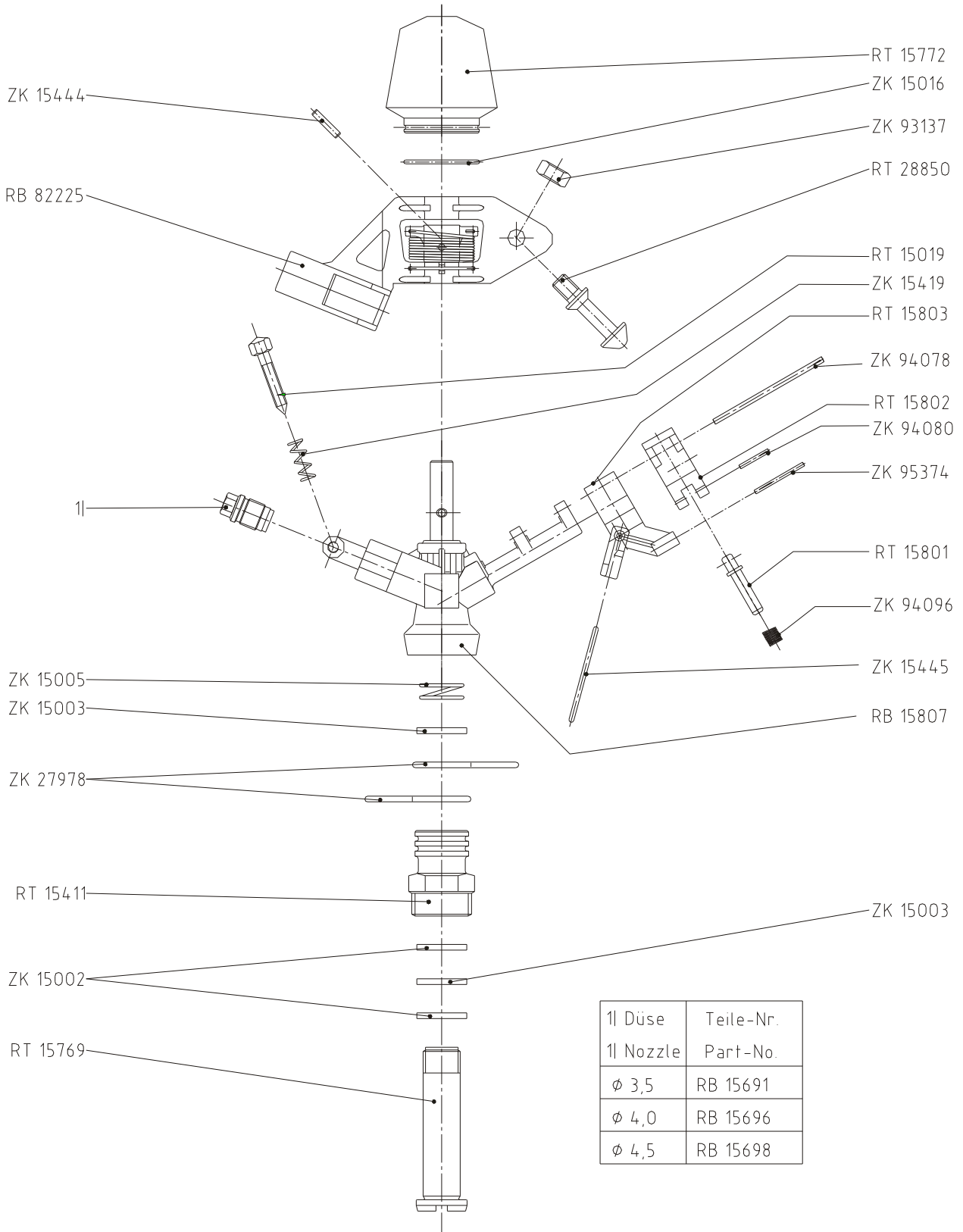
1l Düse	Teile-Nr.
1l Nozzle	Part - No.
$\phi$ 3,5	RB 15691
$\phi$ 4,0	RB 15696
$\phi$ 4,5	RB 15698

Montage-Werkzeuge  
 Assembling tools



**Stand: 21.11.2012**  
**EL 00167**

# ZA 22-2 W



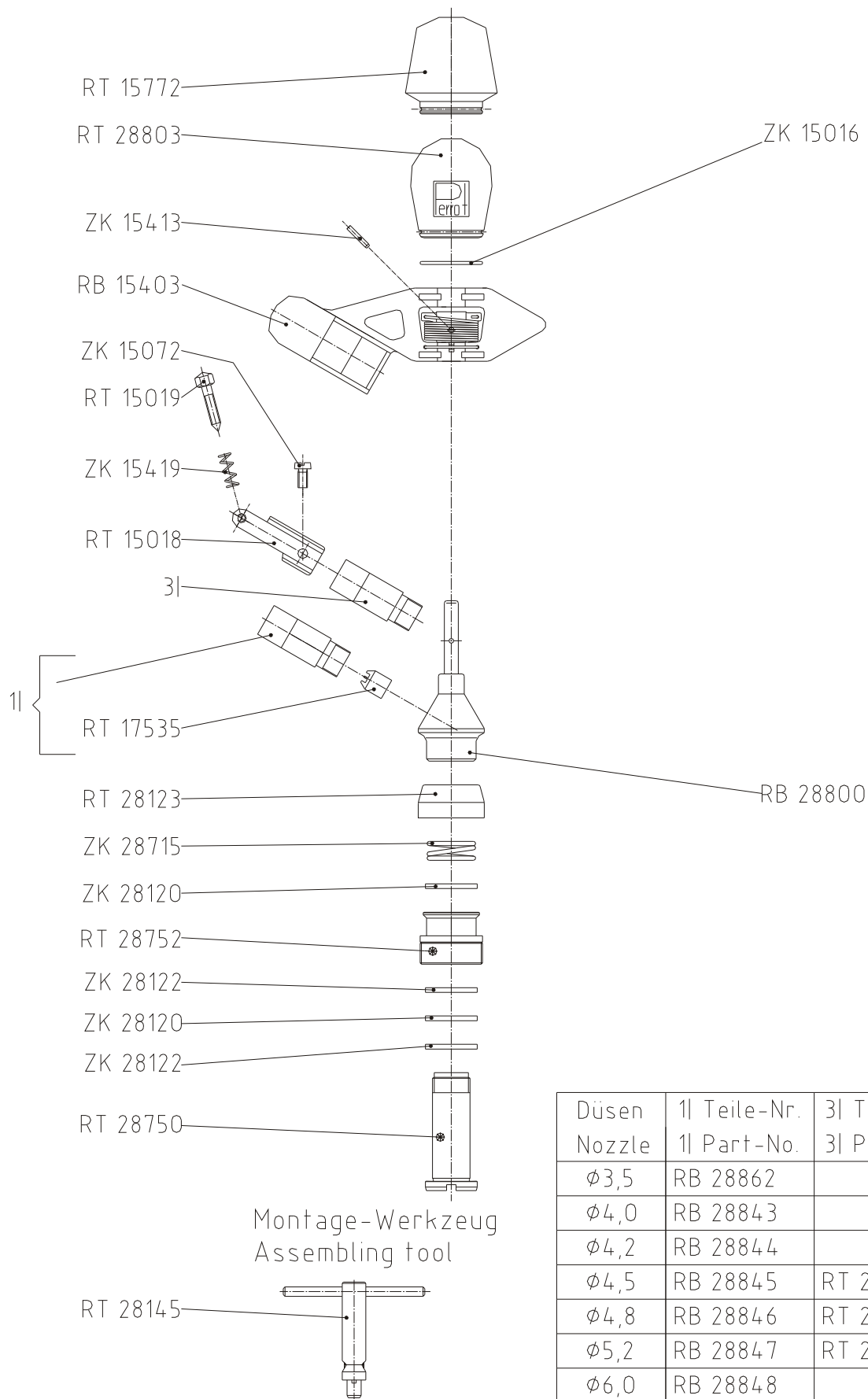
1l Düse	Teile-Nr.
1l Nozzle	Part-No.
∅ 3,5	RB 15691
∅ 4,0	RB 15696
∅ 4,5	RB 15698

Montage-Werkzeuge  
Assembling tools



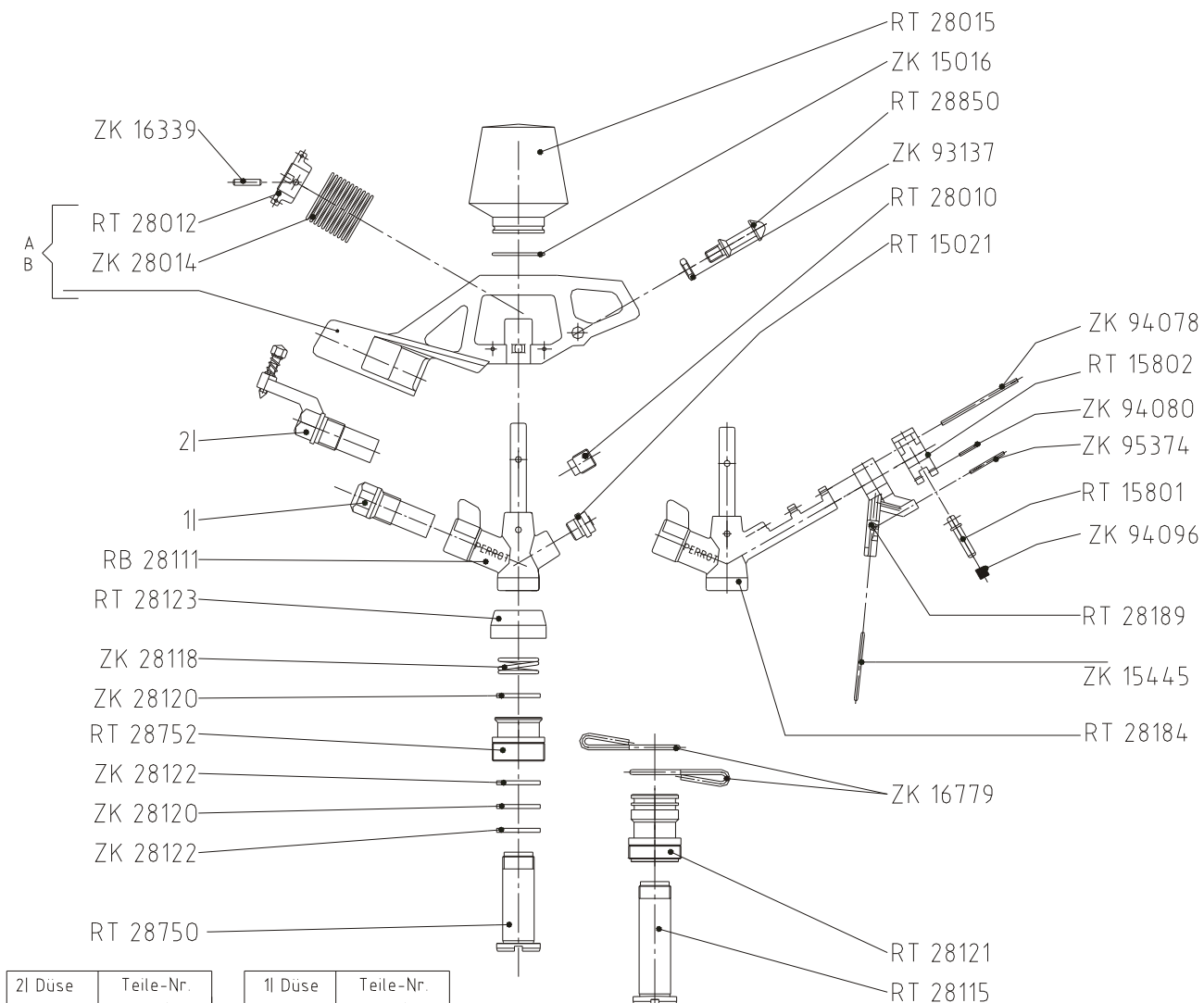
**Stand: 27.01.2014**  
**EL 00179**

# ZS 30 mit Strahlstörer / with jet breaker



**Stand: 16.01.2013**  
**EL 00185**

# ZB 22-3 / W / D

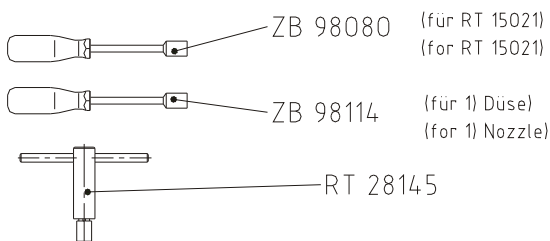


2l Düse	Teile-Nr.
2l Nozzle	Part-No.
∅ 4,2 mm	RB 28781
∅ 4,5 mm	RB 28782
∅ 4,8 mm	RB 28783
∅ 5,0 mm	RB 28784
∅ 5,2 mm	RB 28785
∅ 6,0 mm	RB 28786

1l Düse	Teile-Nr.
1l Nozzle	Part-No.
∅ 4,2 mm	RT 28759
∅ 4,5 mm	RT 28760
∅ 4,8 mm	RT 28761
∅ 5,0 mm	RT 28762
∅ 5,2 mm	RT 28763
∅ 6,0 mm	RT 28764
∅ 7,0 mm	RT 28765
∅ 8,0 mm	RT 28766

A	RB 28110	(nur bei W) (only for W)
B	RB 28109	

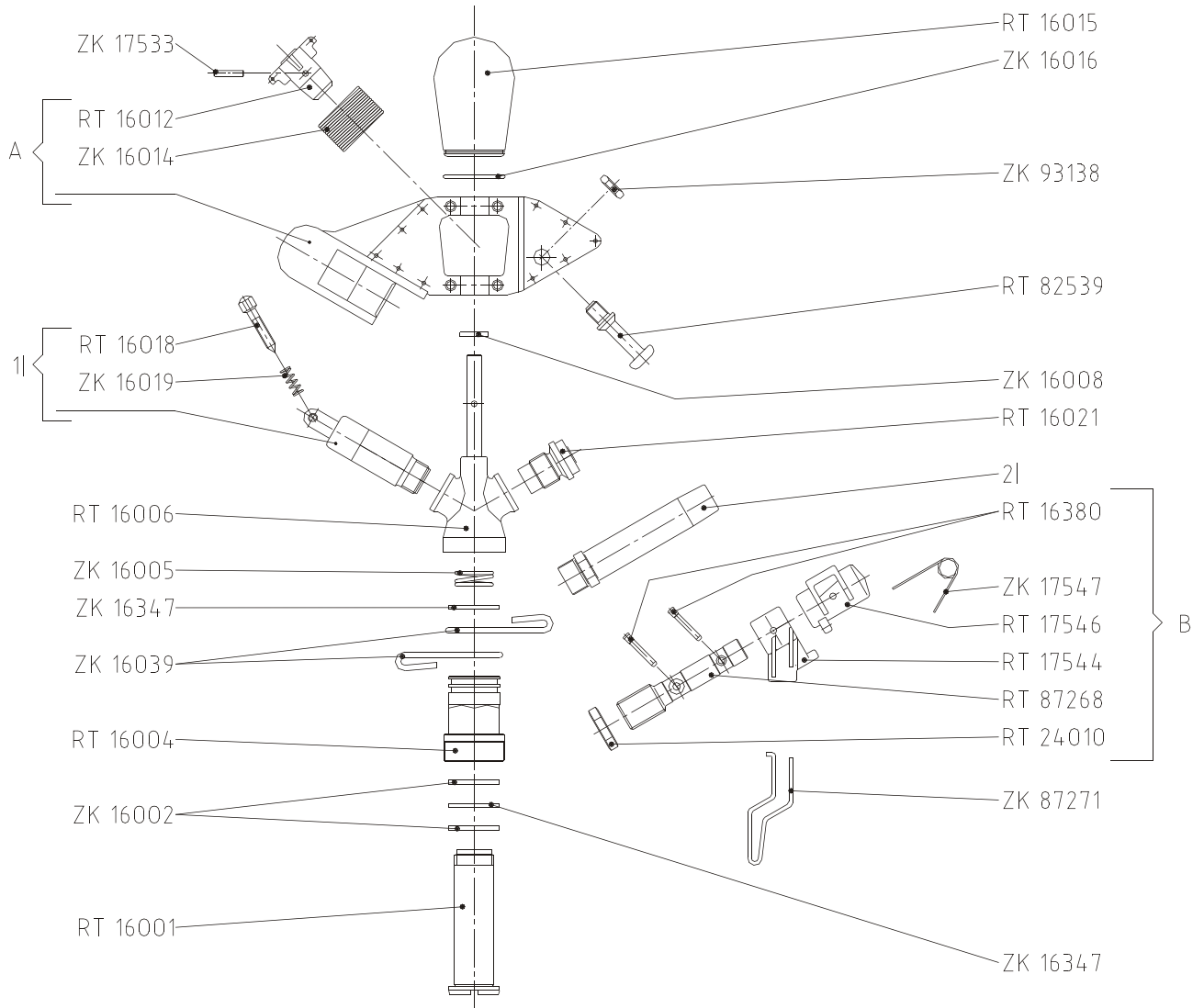
Montage-Werkzeuge  
Assembling tools



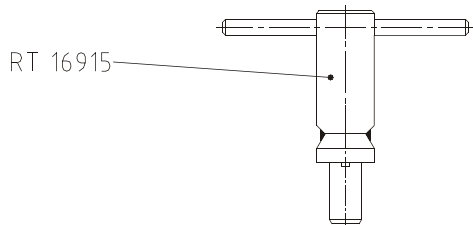
Stand: 06.03.2015  
EL 00183



# ZE 30 / D / W



Montage-Werkzeug  
Assembling tool



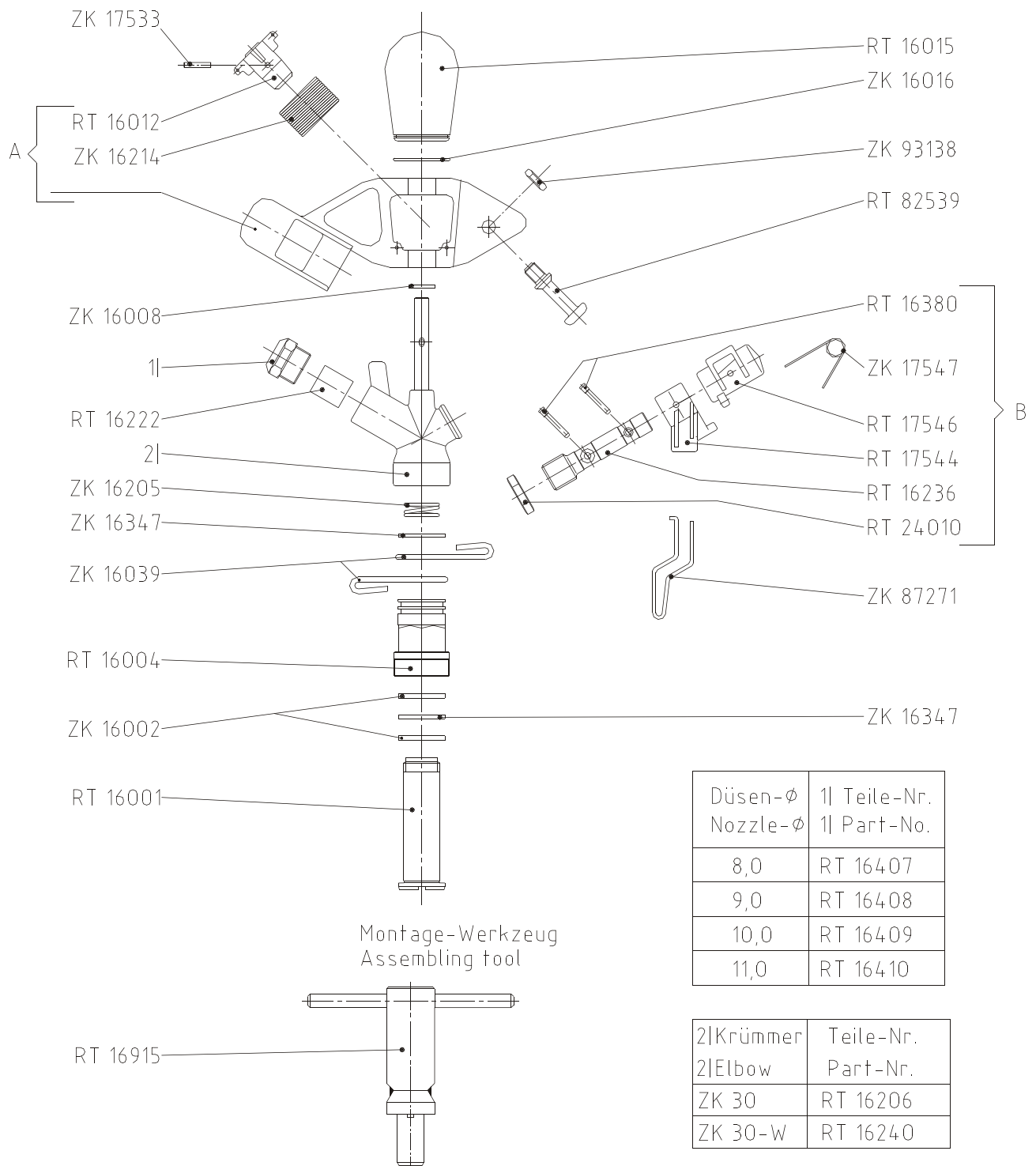
Düsen- $\phi$ Nozzle- $\phi$	1l Teile-Nr. 1l Part-No.
4,5	RB 16358
5,0	RB 16360
6,0	RB 16362
7,0	RB 16363

Düsen- $\phi$ Nozzle- $\phi$	2l Teile-Nr. 2l Part-No.
4,8	RT 16386
5,5	RT 16388
6,5	RT 16389
7,5	RT 16390
8,5	RT 16391

A	RB 16353
B	RB 87261

**Stand: 21.11.2012**  
**EL 00168**

# ZK 30 / W



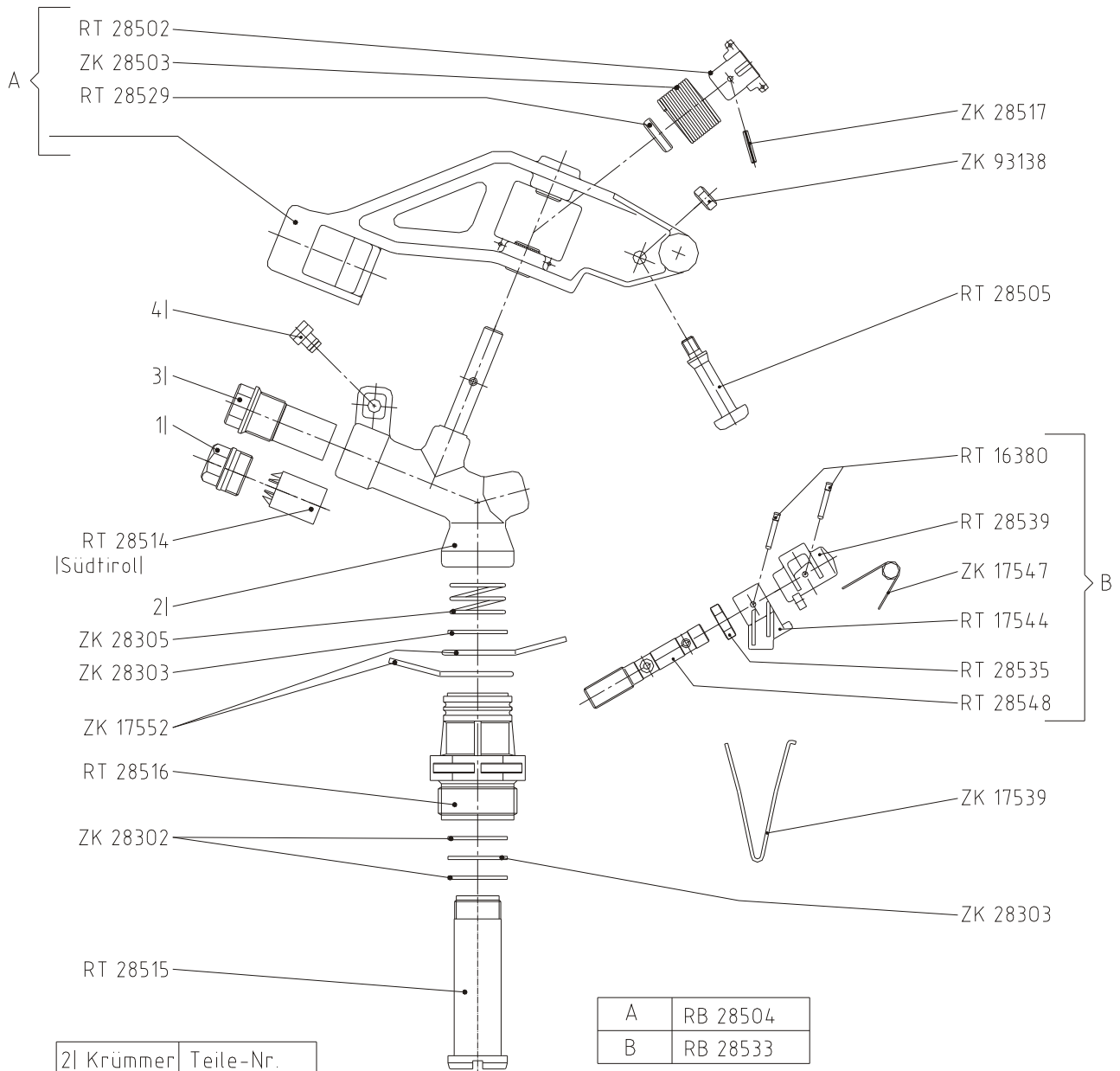
A	RB 16405
B	RB 16235

Düsen- $\phi$ Nozzle- $\phi$	1  Teile-Nr. 1  Part-No.
8,0	RT 16407
9,0	RT 16408
10,0	RT 16409
11,0	RT 16410

2  Krümmer 2  Elbow	Teile-Nr. Part-No.
ZK 30	RT 16206
ZK 30-W	RT 16240

**Stand: 21.11.2012**  
**EL 00169**

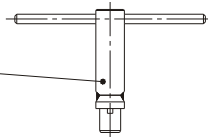
# ZM 22 / W



2l Krümmer 2l Elbow	Teile-Nr. Part-No.
ZM 22	RT 28509
ZM 22W	RT 28530

Montage-Werkzeug  
Assembling tool

RT 28396



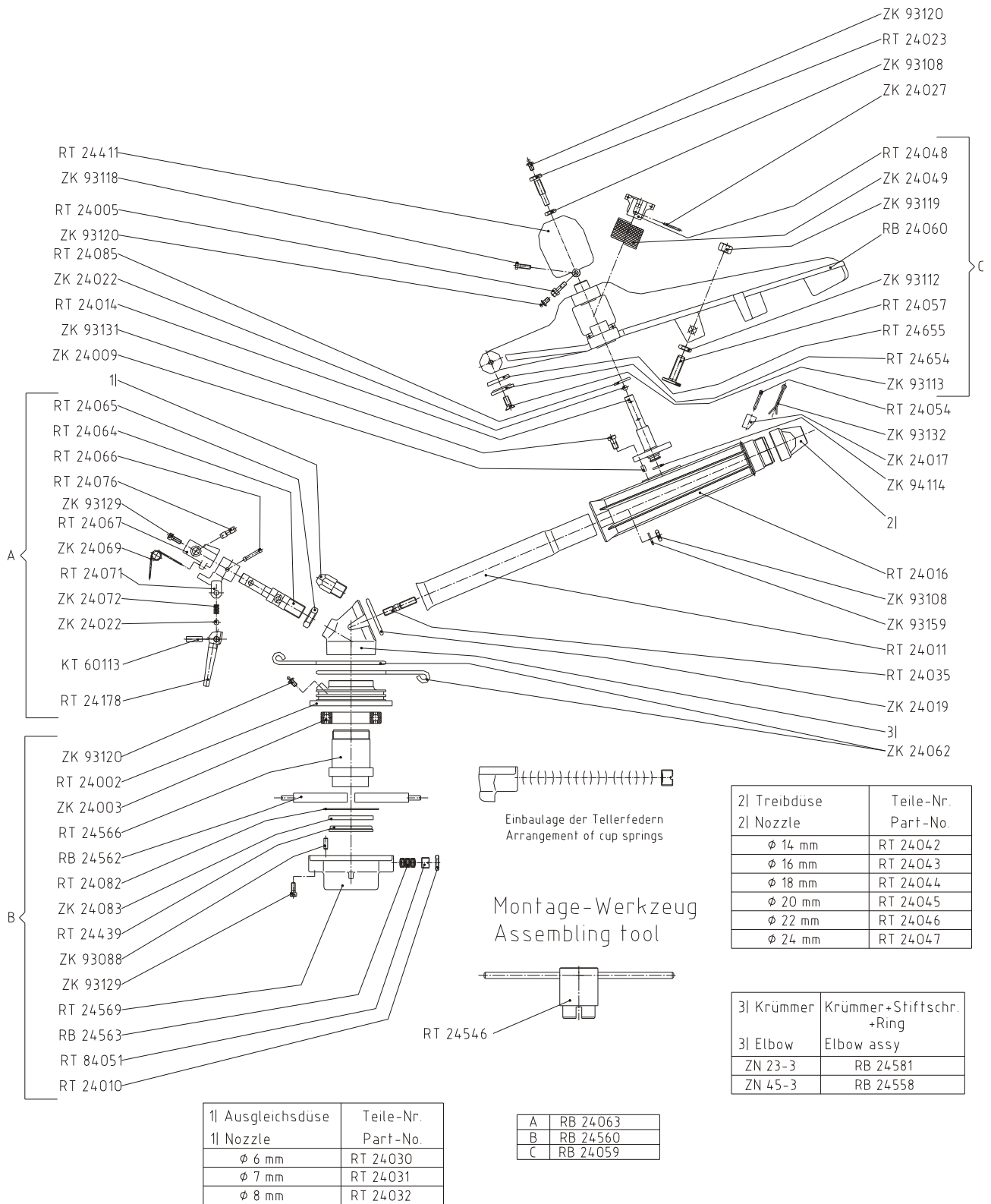
Düsen $\phi$ Nozzle $\phi$	4l
< $\phi$ 14	RT 28512 (schwarz/black)
> $\phi$ 14	RT 28513 (rot/red)

A	RB 28504
B	RB 28533

Teile Nr. Part-No.		
Düsen- $\phi$ Nozzle- $\phi$	1l Messing 1l Brass	3l Kunststoff lab 08.99l 3l Plastic lsince 08.99l
$\phi$ 8	RT 28537	RT 17464
$\phi$ 10	RT 28518	RT 17466
$\phi$ 11	RT 28519	RT 17467
$\phi$ 12	RT 28520	RT 17468
$\phi$ 13	RT 28521	RT 17469
$\phi$ 14	RT 28522	RT 17470
$\phi$ 15	RT 28523	RT 17471
$\phi$ 16	RT 28524	RT 17472

**Stand: 21.11.2012**  
**EL 00170**

# ZN 23 + 45 -3 D / -3 W



- RT 24411
- ZK 93118
- RT 24005
- ZK 93120
- RT 24085
- ZK 24022
- RT 24014
- ZK 93131
- ZK 24009

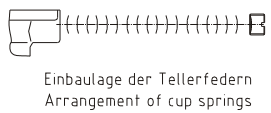
- 1l
- RT 24065
- RT 24064
- RT 24066
- RT 24076
- ZK 93129
- RT 24067
- ZK 24069
- RT 24071
- ZK 24072
- ZK 24022
- KT 60113
- RT 24178

- ZK 93120
- RT 24002
- ZK 24003
- RT 24566
- RB 24562
- RT 24082
- ZK 24083
- RT 24439
- ZK 93088
- ZK 93129
- RT 24569
- RB 24563
- RT 84051
- RT 24010

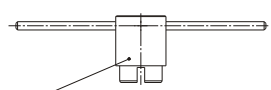
- ZK 93120
- RT 24023
- ZK 93108
- ZK 24027

- RT 24048
- ZK 24049
- ZK 93119
- RB 24060
- ZK 93112
- RT 24057
- RT 24655
- RT 24654
- ZK 93113
- RT 24054
- ZK 93132
- ZK 24017
- ZK 94114

- 2l
- RT 24016
- ZK 93108
- ZK 93159
- RT 24011
- RT 24035
- ZK 24019
- ZK 24062



Montage-Werkzeug  
Assembling tool



2l Treibdüse 2l Nozzle	Teile-Nr. Part-No.
∅ 14 mm	RT 24042
∅ 16 mm	RT 24043
∅ 18 mm	RT 24044
∅ 20 mm	RT 24045
∅ 22 mm	RT 24046
∅ 24 mm	RT 24047

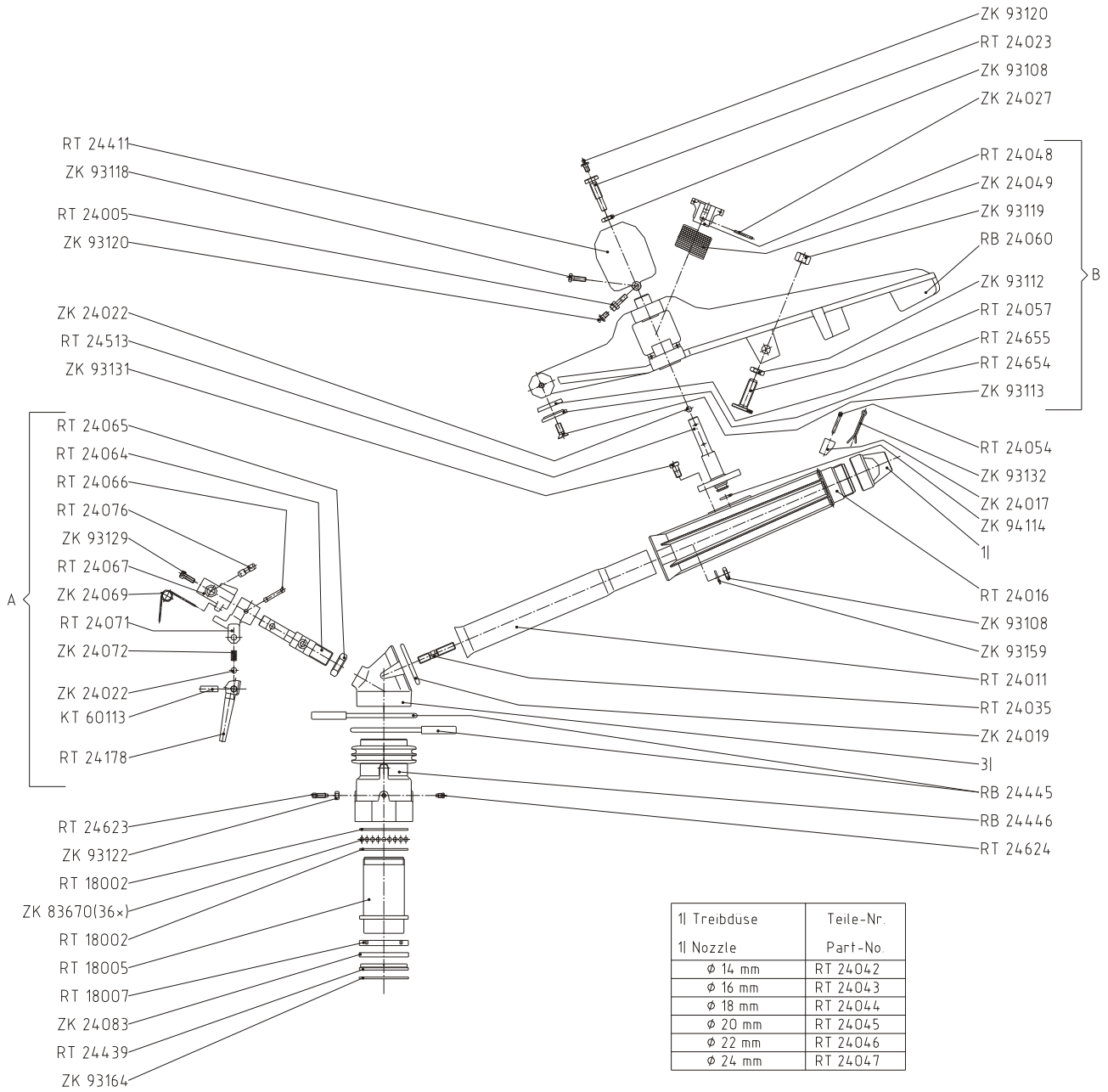
3l Krümmer 3l Elbow	Krümmer+Stiftschr. +Ring Elbow assy
ZN 23-3	RB 24581
ZN 45-3	RB 24558

1l Ausgleichsdüse 1l Nozzle	Teile-Nr. Part-No.
∅ 6 mm	RT 24030
∅ 7 mm	RT 24031
∅ 8 mm	RT 24032

A	RB 24063
B	RB 24560
C	RB 24059

**Stand: 21.11.2012  
EL 00171**

# ZN 23-3 W / VA + ZN 45-3 W / VA



RT 24411  
ZK 93118  
RT 24005  
ZK 93120

ZK 24022  
RT 24513  
ZK 93131

RT 24065  
RT 24064  
RT 24066  
RT 24076  
ZK 93129  
RT 24067  
ZK 24069  
RT 24071  
ZK 24072  
ZK 24022  
KT 60113  
RT 24178

RT 24623  
ZK 93122  
RT 18002  
ZK 83670(36x)  
RT 18002  
RT 18005  
RT 18007  
ZK 24083  
RT 24439  
ZK 93164

ZK 93120  
RT 24023  
ZK 93108  
ZK 24027

RT 24048  
ZK 24049  
ZK 93119  
RB 24060  
ZK 93112  
RT 24057  
RT 24655  
RT 24654  
ZK 93113

RT 24054  
ZK 93132  
ZK 24017  
ZK 94114  
1l

RT 24016  
ZK 93108  
ZK 93159  
RT 24011  
RT 24035  
ZK 24019  
3l  
RB 24445  
RB 24446  
RT 24624

A	RB 24063
B	RB 24059

1l Treibduse	Teile-Nr.
1l Nozzle	Part-No.
φ 14 mm	RT 24042
φ 16 mm	RT 24043
φ 18 mm	RT 24044
φ 20 mm	RT 24045
φ 22 mm	RT 24046
φ 24 mm	RT 24047

3l Krümmer	Krümmer+Stiftschr. +Ring
3l Elbow	Elbow assy
ZN 23-3	RB 24581
ZN 45-3	RB 24558

**Stand: 21.11.2012**  
**EL 00172**









